

2-Way 0° Power Divider
5 to 1000 MHz

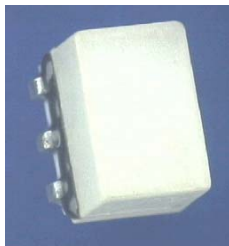
M/A-COM Products
Released, Rev. V2

Features

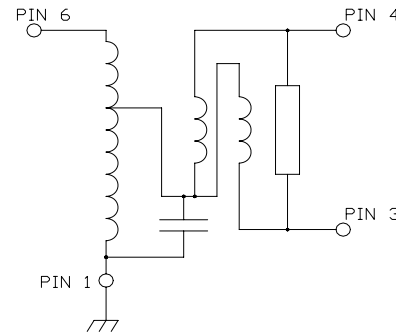
- Surface Mount, hermetically sealed
- 2 Way, 0 Degree
- 260°C Reflow Compatible
- RoHS* Compliant
- RoHS version of ESSMJ-2-12-75TR
- 75 Ohm
- Available on Tape and Reel

Description

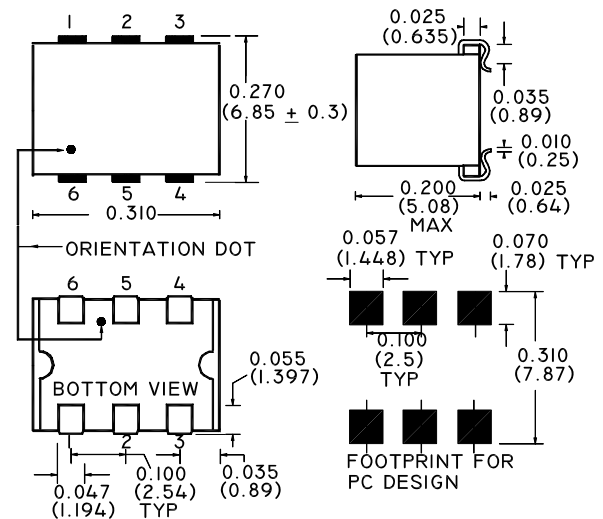
M/A-COM's MAPD-008108-C202C0 is a 2 Way 0° Power Divider in a low cost, surface mount package. Ideally suited for high volume CATV/Broadband applications.



Schematic



Case style: SM-44



Pin configuration

Pin No.	Function
1	Ground
2	Not Connected
3	Output Port 2
4	Output Port 1
5	Not Connected
6	Input

Note: Reference Application Note **M513** for reel size information.

Ordering information

Part Number	Description
MAPD-008108-C202C0	900 per reel
MAPD-008108-C202TB	Customer Test Board

* Restrictions on Hazardous Substances, European Union Directive 2002/95/EC.

2-Way 0° Power Divider
5 to 1000 MHz

M/A-COM Products
Released, Rev. V2

Electrical Specifications: $T_A = 25^\circ\text{C}$, $Z_0 = 75\Omega$, $P_{IN} = 0\text{dBm}$

Parameter	Frequency	Units	Minimum	Typical	Maximum
Insertion Loss	5 - 500 MHz	dB	—	0.4	0.6
	500 - 1000 MHz	dB	—	0.5	1.2
Isolation	5 - 600 MHz	dB	20	35	—
	600 - 1000 MHz	dB	17.5	30	—
Amplitude Unbalance	5 - 600 MHz	dB	—	—	0.2
	600 - 1000 MHz	dB	—	—	0.5
Phase Unbalance	5 - 100 MHz	°	—	—	1.5
	100 - 500 MHz	°	—	—	3.5
	500 - 1000 MHz	°	—	—	4.0
Output Return Loss	5 - 40 MHz	dB	12	20	—
	40 - 1000 MHz	dB	20	25	—
Input Return Loss	5 - 40 MHz	dB	13.5	20	—
	40 - 500 MHz	dB	20	24	—
	500 - 860 MHz	dB	17	21	—
	860 - 1000 MHz	dB	14	19	—
Insertion Loss Flatness	5 - 1000 MHz	dB	—	—	0.9

Absolute maximum ratings ^{1,2}

Parameter	Absolute Maximum
RF Power	1 Watt
Internal Load Dissipation	0.125 Watt
Pin Temp (10 sec.)	260°C
Storage Temperature	-55°C to +100°C
Operating Temperature	-40°C to +85°C

1. Exceeding any one or combination of these limits may cause permanent damage to this device.
2. M/A-COM does not recommend sustained operation near these survivability limits.

2

M/A-COM Inc. and its affiliates reserve the right to make changes to the product(s) or information contained herein without notice. M/A-COM makes no warranty, representation or guarantee regarding the suitability of its products for any particular purpose, nor does M/A-COM assume any liability whatsoever arising out of the use or application of any product(s) or information.

- **North America** Tel: 800.366.2266 / Fax: 978.366.2266
- **Europe** Tel: 44.1908.574.200 / Fax: 44.1908.574.300
- **Asia/Pacific** Tel: 81.44.844.8296 / Fax: 81.44.844.8298

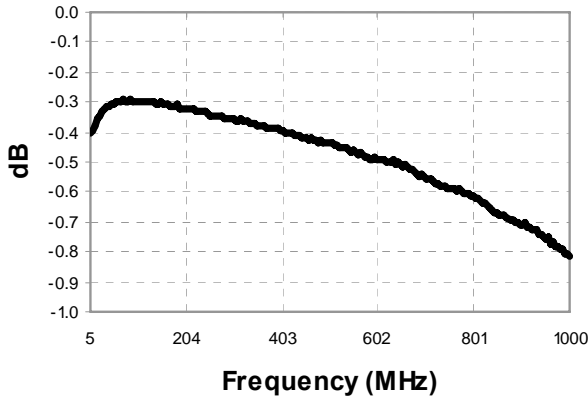
Visit www.macom.com for additional data sheets and product information.

2-Way 0° Power Divider
5 to 1000 MHz

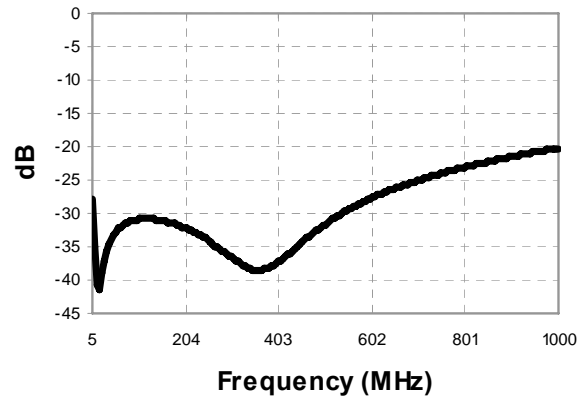
M/A-COM Products
Released, Rev. V2

Typical Performance Curves: $T_A = 25^\circ\text{C}$, $Z_0 = 75\Omega$, $P_{IN} = 0\text{dBm}$

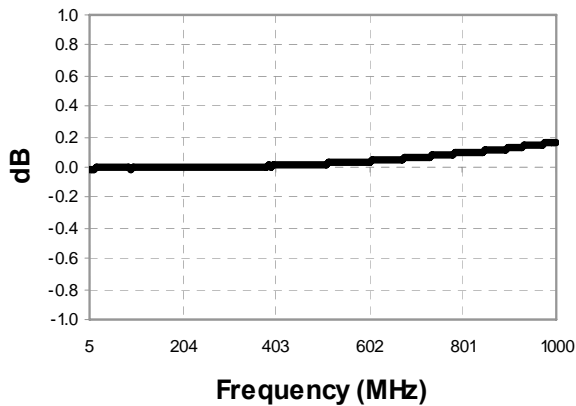
Insertion Loss



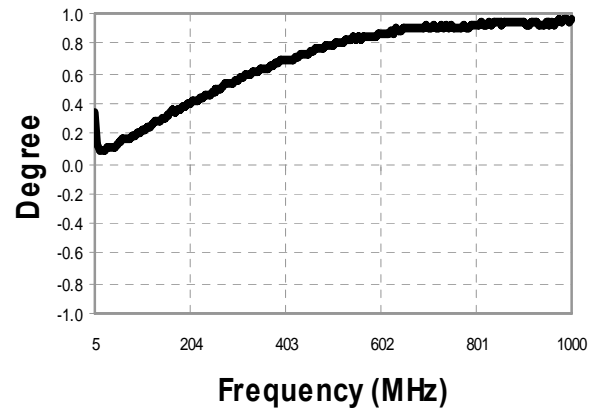
Isolation



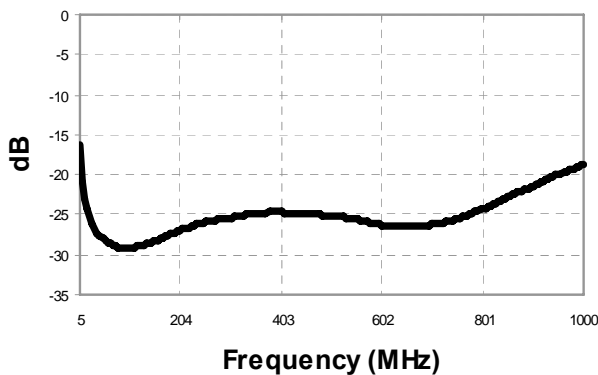
Amplitude Balance



Phase Balance



Return Loss: Input



Return Loss: Output

